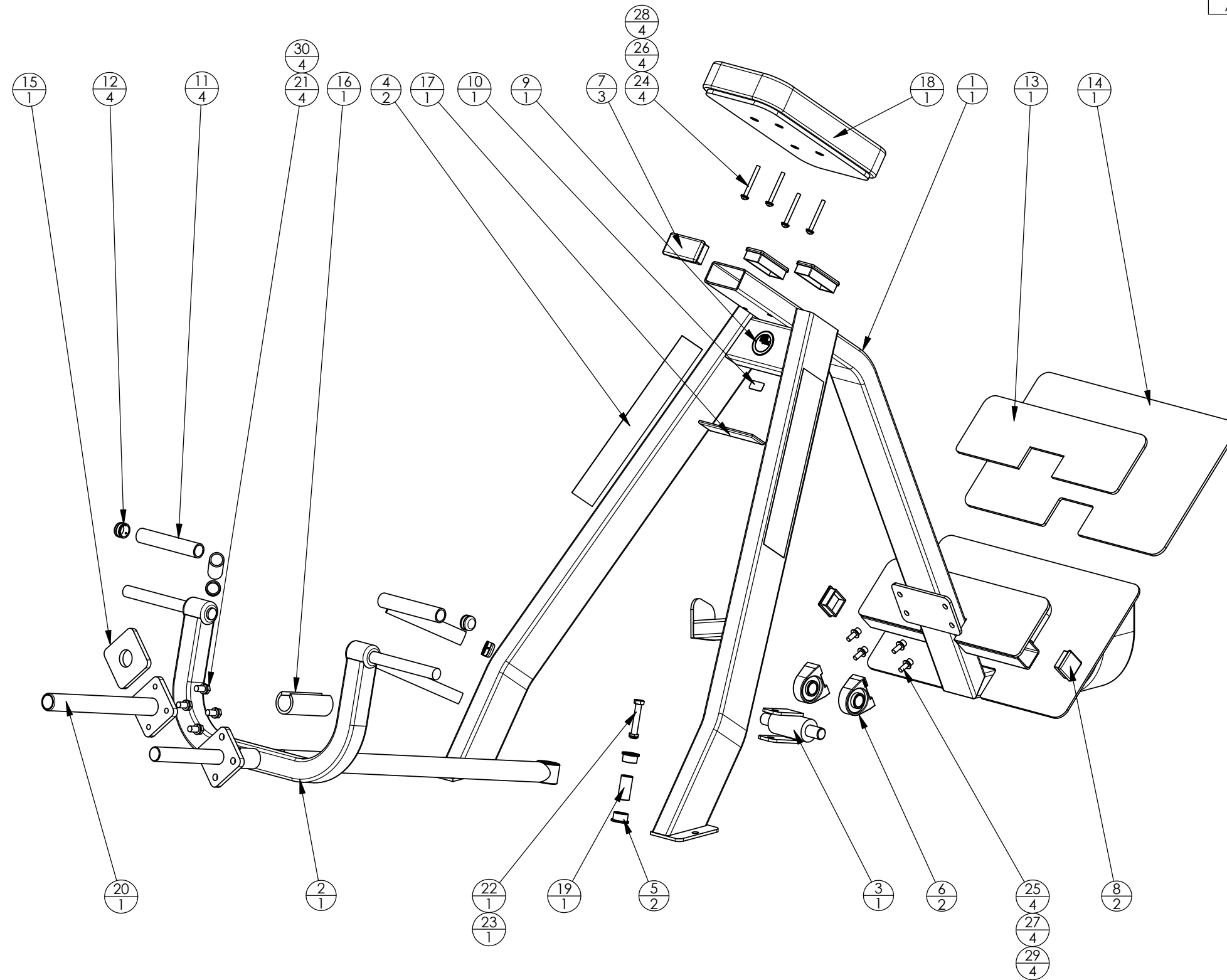


REVISIONS				
REV	ECN #	DESCRIPTION	REV. BY/DATE	APR. BY
A	-----	REDRAWN & UPDATED IN SOLIDWORKS	04/2000	



ITEM NO.	QTY.	PART NO.	DESCRIPTION
1	1	311-SA-1	311 MAIN FRAME ASSY
2	1	311-SA-2	311 LEVER ARM ASSY
3	1	311-SA-3	311 PIVOT JOINT ASSY
4	2	AC1002	LABEL, "ICARIAN", 3 1/2 x 21 1/2
5	2	AC1021	BUSHING, BRONZE, 1.010" ID x 1 1/4" OD
6	2	AC1026	PILLOW BLOCK BEARING 2 BOLT, TAPPED
7	3	AC1057	CAP, BLACK PLASTIC, 2 x 4
8	2	AC1058	CAP, BLACK PLASTIC, 2 x 2
9	1	AC1161	LABEL, ROUND, "MADE IN USA"
10	1	AC1164	LABEL, F.P.I. SERIAL NUMBER
11	4	AC1226-9	RUBBERGRIP, DIA 1 x (7)
12	4	AC218	HANDLE END CAP W/SET SCREWS, DIA 1"
13	1	CP0006	CUT PIECE, CREPE, 1/4 x 6 x 19 1/2, NOTCHED
14	1	CP1016	CUT PIECE, CREPE, 1/4 x 14 x 24, NOTCHED
15	1	CP1033	CUT PIECE, CREPE, 7/16 x 4 x 4, 1 HOLE
16	1	CP1053	UHMW TUBE, 2 OD x 1 1/2 ID x (5), SLOTTED
17	1	CP1117	ABS BLACK, 1/4 x 1 3/4 x 6 1/2
18	1	PD1105	PAD, 9 x 17, 4 HOLES
19	1	PF1436	STEEL TUBE RND DOM 1/2 ID x 1 OD x (2 1/16)
20	1	SA1108	ASSY, WEIGHT HOLDER, 1 1/2 x 13 1/2
21	4	FA1011	BOLT, HEX HEAD, BLK, 1/2-13 x 1
22	1	FA1015	BOLT, HEX HEAD, BLK, 1/2-13 x 3
23	1	FA1043	NUT, HEX, LOW PROFILE, NYLOCK, 1/2-13
24	4	FA1074	BOLT, BUTTON HEAD, 5/16-18 x 3
25	4	FA1078	BOLT, SOCKET HEAD, 3/8-16 x 1
26	4	FA1106	WASHER, FLAT, 5/16 ID x 11/16 OD
27	4	FA1107	WASHER, FLAT, 3/8 ID x 13/16 OD
28	4	FA1116	WASHER, SPLIT, 5/16 ID
29	4	FA1117	WASHER, SPLIT, 3/8 ID
30	4	FA1119	WASHER, SPLIT, 1/2 ID

WEIGHT: 190 LBS.

UNLESS OTHERWISE SPECIFIED DIMENSIONS ARE IN INCHES

TOLERANCES ARE:

FRACTIONS	DECIMALS	ANGLES
± 1/32	.XX ± .01 .XXX ± .005	± 1°

THIRD ANGLE PROJECTION



DO NOT SCALE DRAWING

		FITNESS PRODUCTS INTERNATIONAL ICARIAN FLITE ABENCH JADE STRETCH CENTER 12660 BRANFORD ST. SUN VALLEY, CA. 91352		TITLE INCLINE LEVER ROW	SCALE 1:10
		APPROVALS DESIGNED BY: AA MODELED BY: RJB DRAWN BY: RJB APPROVED BY:	DATE 02/95 11/98 04/00		
		SIZE B	DWG. NO. 311-EXP	REV A	

311 Incline Lever Row

Part Number	Description	Bubble Number
CW311SA1-211	ASSY,FRAME,MAIN,311,SKY WHITE	1.01
CW311SA1-221	ASSY,FRAME,MAIN,311,BLACK	1.02
CW311SA1-231	ASSY,FRAME,MAIN,311,RED	1.03
CW311SA1-241	ASSY,FRAME,MAIN,311,PLATINUM SPRKLE	1.04
CW311SA1-251	ASSY,FRAME,MAIN,311,SILVER	1.05
CW311SA1-261	ASSY,FRAME,MAIN,311,BLUE	1.06
CW311SA1-271	ASSY,FRAME,MAIN,311,CHARCOAL	1.07
CW311SA1-281	ASSY,FRAME,MAIN,311,CATHEDRAL GRAY	1.08
CW311SA1-291	ASSY,FRAME,MAIN,311,SILVER VIEN	1.09
CW311SA1-311	ASSY,FRAME,MAIN,311,STONE HG	1.11
CW311SA1-321	ASSY,FRAME,MAIN,311,TITANIUM HG	1.12
CW311SA1-331	ASSY,FRAME,MAIN,311,WHITE GLOSS	1.13
CW311SA1-341	ASSY,FRAME,MAIN,311,BLACK ONYX	1.14
CW311SA1-351	ASSY,FRAME,MAIN,311,LIGHT BRONZE	1.15
CW311SA1-361	ASSY,FRAME,MAIN,311,SAPPHIRE BLUE	1.16
CW311SA2-211	ASSY, LEVER ARM, 311,SKY WHITE	2.01
CW311SA2-221	ASSY, LEVER ARM, 311,BLACK	2.02
CW311SA2-231	ASSY, LEVER ARM, 311,RED	2.03
CW311SA2-241	ASSY, LEVER ARM, 311,PLAT SPKLE	2.04
CW311SA2-251	ASSY, LEVER ARM, 311,SILVER	2.05
CW311SA2-261	ASSY, LEVER ARM, 311,BLUE	2.06
CW311SA2-271	ASSY, LEVER ARM, 311,CHARCOAL	2.07
CW311SA2-281	ASSY, LEVER ARM, 311,CATH GRY	2.08
CW311SA2-291	ASSY, LEVER ARM, 311,SILVER VIEN	2.09
CW311SA2-311	ASSY, LEVER ARM, 311,STONE HG	2.11
CW311SA2-321	ASSY, LEVER ARM, 311,TITANIUM HG	2.12
CW311SA2-331	ASSY, LEVER ARM, 311,WHITE GLOSS	2.13
CW311SA2-341	ASSY, LEVER ARM, 311,BLACK ONYX	2.14
CW311SA2-351	ASSY, LEVER ARM, 311,LIGHT BRONZE	2.15
CW311SA2-361	ASSY, LEVER ARM, 311,SAPPHIRE BLUE	2.16
CW311SA3-211	ASSY,PIVOT JOINT,SKY WHITE	3.01
CW311SA3-221	ASSY,PIVOT JOINT,,BLACK	3.02
CW311SA3-231	ASSY,PIVOT JOINT,RED	3.03
CW311SA3-241	ASSY,PIVOT JOINT,PLATINUM SPARKLE	3.04
CW311SA3-251	ASSY,PIVOT JOINT,SILVER	3.05
CW311SA3-261	ASSY,PIVOT JOINT,BLUE	3.06
CW311SA3-271	ASSY,PIVOT JOINT,CHARCOAL	3.07
CW311SA3-281	ASSY,PIVOT JOINT,CATHEDRAL GRAY	3.08
CW311SA3-291	ASSY,PIVOT JOINT,SILVER VEIN	3.09
CW311SA3-311	ASSY,PIVOT JOINT,311,STONE HG	3.11
CW311SA3-321	ASSY,PIVOT JOINT,TITANIUM HG	3.12
CW311SA3-331	ASSY,PIVOT JOINT,WHITE GLOSS	3.13
CW311SA3-341	ASSY,PIVOT JOINT,BLACK ONYX	3.14
CW311SA3-351	ASSY,PIVOT JOINT,LIGHT BRONZE	3.15
CW311SA3-361	ASSY,PIVOT JOINT,SAPPHIRE BLUE	3.16
CW31756-101	LABEL, PRECOR USA ICARIAN LINE	4
CW10043-134	BUSHING, BRONZE, 1" ID X 1 1/4" OD	5
CW12406-101	PILLOW BLOCK, BEARING, 2 BOLT	6
CW11311-102	ENDCAP, REC TUBE, 2X4, BLK PLASTIC	7
CW11311-103	ENDCAP, REC TUBE, 2X2, BLK PLASTIC	8

CWGR2607-000	GRIP,RUBBER, 1" DIA, 7"	11
CWAC218-901	HANDLE END CAP W/SET SCREWS, DIA 1"	12
CWCP0006-101	CUT PIECE, CREPE, 1/4 X 6 X 19 1/2,	13
CW30013-123	CUT PIECE, CREPE, 1/4 X 14 X 24, NO	14
CWCP1053-101	CUT PIECE, UHMW, TUBE, 2 OD X 1 1/2	16
CW30016-106	CUT PIECE, ABS BLACK, 1/4 X 1 3/4 X	17
CWPD1105B-101	PAD,9X17,4HOLES,W/BP,BLACK	18.01
CWPD1105B-102	PAD,9X17,4HOLES,W/BP,RYL BL	18.02
CWPD1105B-103	PAD,9X17,4HOLES,W/BP,DVE GRY	18.03
CWPD1105B-104	PAD,9X17,4HOLES,W/BP,CROCUS	18.04
CWPD1105B-105	PAD,9X17,4HOLES,W/BP,GROTTO	18.05
CWPD1105B-106	PAD,9X17,4HOLES,W/BP,GRAPHITE	18.06
CWPD1105B-107	PAD,9X17,4HOLES,W/BP,RED	18.07
CWPD1105B-108	PAD,9X17,4HOLES,W/BP,CHN GRN	18.08
CWPD1105B-109	PAD,9X17,4HOLES,W/BP,TURQSE	18.09
CWPD1105B-110	PAD,9X17,4HOLES,W/BP,RASP	18.1
CWPD1105B-111	PAD,9X17,4HOLES,W/BP,PLUM	18.11
CWPD1105B-112	PAD,9X17,4HOLES,W/BP,REGIMENT	18.12
CWPD1105B-113	PAD,9X17,4HOLES,W/BP,SPC BLUE	18.13
CWPD1105B-115	PAD,9X17,4HOLES,W/BP,BLK LTHR	18.15
CWPD1105B-116	PAD,9X17,4HOLES,W/BP,NVBL LTH	18.16
CWPD1105B-117	PAD,9X17,4HOLES,W/BP,PUTTY	18.17
CWPD1105B-118	PAD,9X17,4HOLES,W/BP,IMPRL BLUE	18.18
CWPD1105B-119	PAD,9X17,4HOLES,W/BP,YEW GREEN	18.19
CWPD1105B-120	PAD,9X17,4HOLES,W/BP,DUSTY JADE	18.2
CWPD1105B-121	PAD,9X17,4HOLES,W/BP,TERRA COTTA	18.21
CWPD1105B-122	PAD,9X17,4HOLES,W/BP,PAPRIKA	18.22
CWPD1105B-123	PAD,9X17,4HOLES,W/BP,ASH LTHR	18.23
CWPD1105B-124	PAD,9X17,4HOLES,W/BP,CERULEAN LTHR	18.24
CWPD1105B-125	PAD,9X17,4HOLES,W/BP,CHARCOAL LTHR	18.25
CWPD1105B-126	PAD,9X17,4HOLES,W/BP,HUNTER LTHR	18.26
CWPD1105B-127	PAD,9X17,4HOLES,W/BP,MOSS LTHR	18.27
CWPD1105B-128	PAD,9X17,4HOLES,W/BP,SPICE LTHR	18.28
CWPD1105B-129	PAD,9X17,4HOLES,W/BP,TOMATO LTHR	18.29
CWPF3442-741	TUBE,STEEL,RND DOM 1/2 ID X 0.995"	19
CWCP1033-101	CUT PIECE, CREPE, 7/16 X 4 X 4, 1 H	20
CWSA1108-741	ASSY,WEIGHT,HOLDER,1.5 X 13.5,CLEAR	20
CWHCYN050-100	SCREW,HEX HEAD,BLK XYLAN,1/2-13 X 1	21
CWHCYN050-300	SCREW, HEX HEAD, BLK XYLAN, 1/2-13	22
CWKAYN050-031	LOCKNUT, NYLON INSERT, HALF, UNC, 1	23
CWTAYN031-300	SCREW, BUTTON HEAD, BLK XYLAN,5/16	24
CWCAYN038-100	SCREW, SOCKET HEAD, BLK XYLAN, 3/	25
CWWBKN031-007	WASHER, FLAT, TYPE A, SAE, 5/16 ID	26
CWWBKN038-007	WASHER, FLAT, TYPE A, SAE, 3/8 ID	27
CWWALYN031-008	WASHER, SPLIT, 5/16 ID, BL	28
CWWALYN038-009	WASHER, SPLIT, 3/8 ID, BLK XYLAN	29
CWWALYN050-013	WASHER, SPLIT, 1/2 ID, BLK XYLAN	30
CW31756-101	LABEL, PRECOR USA ICARIAN LINE	31
CWAC1178-101	FLOOR PROTECTOR, RUBBER, 2.563 X 6.	501
CWAC1231-101	FLOOR PROTECTOR, RUBBER, 5.563 X 4.	502

311 Incline Lever Row

Part Number	Description	Bubble Number
CW311SA1-211	ASSY,FRAME,MAIN,311,SKY WHITE	1.01
CW311SA1-221	ASSY,FRAME,MAIN,311,BLACK	1.02
CW311SA1-231	ASSY,FRAME,MAIN,311,RED	1.03
CW311SA1-241	ASSY,FRAME,MAIN,311,PLATINUM SPRKLE	1.04
CW311SA1-251	ASSY,FRAME,MAIN,311,SILVER	1.05
CW311SA1-261	ASSY,FRAME,MAIN,311,BLUE	1.06
CW311SA1-271	ASSY,FRAME,MAIN,311,CHARCOAL	1.07
CW311SA1-281	ASSY,FRAME,MAIN,311,CATHEDRAL GRAY	1.08
CW311SA1-291	ASSY,FRAME,MAIN,311,SILVER VIEN	1.09
CW311SA1-311	ASSY,FRAME,MAIN,311,STONE HG	1.11
CW311SA1-321	ASSY,FRAME,MAIN,311,TITANIUM HG	1.12
CW311SA1-331	ASSY,FRAME,MAIN,311,WHITE GLOSS	1.13
CW311SA1-341	ASSY,FRAME,MAIN,311,BLACK ONYX	1.14
CW311SA1-351	ASSY,FRAME,MAIN,311,LIGHT BRONZE	1.15
CW311SA1-361	ASSY,FRAME,MAIN,311,SAPPHIRE BLUE	1.16
CW311SA2-211	ASSY, LEVER ARM, 311,SKY WHITE	2.01
CW311SA2-221	ASSY, LEVER ARM, 311,BLACK	2.02
CW311SA2-231	ASSY, LEVER ARM, 311,RED	2.03
CW311SA2-241	ASSY, LEVER ARM, 311,PLAT SPKLE	2.04
CW311SA2-251	ASSY, LEVER ARM, 311,SILVER	2.05
CW311SA2-261	ASSY, LEVER ARM, 311,BLUE	2.06
CW311SA2-271	ASSY, LEVER ARM, 311,CHARCOAL	2.07
CW311SA2-281	ASSY, LEVER ARM, 311,CATH GRY	2.08
CW311SA2-291	ASSY, LEVER ARM, 311,SILVER VIEN	2.09
CW311SA2-311	ASSY, LEVER ARM, 311,STONE HG	2.11
CW311SA2-321	ASSY, LEVER ARM, 311,TITANIUM HG	2.12
CW311SA2-331	ASSY, LEVER ARM, 311,WHITE GLOSS	2.13
CW311SA2-341	ASSY, LEVER ARM, 311,BLACK ONYX	2.14
CW311SA2-351	ASSY, LEVER ARM, 311,LIGHT BRONZE	2.15
CW311SA2-361	ASSY, LEVER ARM, 311,SAPPHIRE BLUE	2.16
CW311SA3-211	ASSY,PIVOT JOINT,SKY WHITE	3.01
CW311SA3-221	ASSY,PIVOT JOINT,,BLACK	3.02
CW311SA3-231	ASSY,PIVOT JOINT,RED	3.03
CW311SA3-241	ASSY,PIVOT JOINT,PLATINUM SPARKLE	3.04
CW311SA3-251	ASSY,PIVOT JOINT,SILVER	3.05
CW311SA3-261	ASSY,PIVOT JOINT,BLUE	3.06
CW311SA3-271	ASSY,PIVOT JOINT,CHARCOAL	3.07
CW311SA3-281	ASSY,PIVOT JOINT,CATHEDRAL GRAY	3.08
CW311SA3-291	ASSY,PIVOT JOINT,SILVER VEIN	3.09
CW311SA3-311	ASSY,PIVOT JOINT,311,STONE HG	3.11
CW311SA3-321	ASSY,PIVOT JOINT,TITANIUM HG	3.12
CW311SA3-331	ASSY,PIVOT JOINT,WHITE GLOSS	3.13
CW311SA3-341	ASSY,PIVOT JOINT,BLACK ONYX	3.14
CW311SA3-351	ASSY,PIVOT JOINT,LIGHT BRONZE	3.15
CW311SA3-361	ASSY,PIVOT JOINT,SAPPHIRE BLUE	3.16
CW31756-101	LABEL, PRECOR USA ICARIAN LINE	4
CW10043-134	BUSHING, BRONZE, 1" ID X 1 1/4" OD	5
CW12406-101	PILLOW BLOCK, BEARING, 2 BOLT	6
CW11311-102	ENDCAP, REC TUBE, 2X4, BLK PLASTIC	7
CW11311-103	ENDCAP, REC TUBE, 2X2, BLK PLASTIC	8

CWGR2607-000	GRIP,RUBBER, 1" DIA, 7"	11
CWAC218-901	HANDLE END CAP W/SET SCREWS, DIA 1"	12
CWCP0006-101	CUT PIECE, CREPE, 1/4 X 6 X 19 1/2,	13
CW30013-123	CUT PIECE, CREPE, 1/4 X 14 X 24, NO	14
CWCP1053-101	CUT PIECE, UHMW, TUBE, 2 OD X 1 1/2	16
CW30016-106	CUT PIECE, ABS BLACK, 1/4 X 1 3/4 X	17
CWPD1105B-101	PAD,9X17,4HOLES,W/BP,BLACK	18.01
CWPD1105B-102	PAD,9X17,4HOLES,W/BP,RYL BL	18.02
CWPD1105B-103	PAD,9X17,4HOLES,W/BP,DVE GRY	18.03
CWPD1105B-104	PAD,9X17,4HOLES,W/BP,CROCUS	18.04
CWPD1105B-105	PAD,9X17,4HOLES,W/BP,GROTTO	18.05
CWPD1105B-106	PAD,9X17,4HOLES,W/BP,GRAPHITE	18.06
CWPD1105B-107	PAD,9X17,4HOLES,W/BP,RED	18.07
CWPD1105B-108	PAD,9X17,4HOLES,W/BP,CHN GRN	18.08
CWPD1105B-109	PAD,9X17,4HOLES,W/BP,TURQSE	18.09
CWPD1105B-110	PAD,9X17,4HOLES,W/BP,RASP	18.1
CWPD1105B-111	PAD,9X17,4HOLES,W/BP,PLUM	18.11
CWPD1105B-112	PAD,9X17,4HOLES,W/BP,REGIMENT	18.12
CWPD1105B-113	PAD,9X17,4HOLES,W/BP,SPC BLUE	18.13
CWPD1105B-115	PAD,9X17,4HOLES,W/BP,BLK LTHR	18.15
CWPD1105B-116	PAD,9X17,4HOLES,W/BP,NVBL LTH	18.16
CWPD1105B-117	PAD,9X17,4HOLES,W/BP,PUTTY	18.17
CWPD1105B-118	PAD,9X17,4HOLES,W/BP,IMPRL BLUE	18.18
CWPD1105B-119	PAD,9X17,4HOLES,W/BP,YEW GREEN	18.19
CWPD1105B-120	PAD,9X17,4HOLES,W/BP,DUSTY JADE	18.2
CWPD1105B-121	PAD,9X17,4HOLES,W/BP,TERRA COTTA	18.21
CWPD1105B-122	PAD,9X17,4HOLES,W/BP,PAPRIKA	18.22
CWPD1105B-123	PAD,9X17,4HOLES,W/BP,ASH LTHR	18.23
CWPD1105B-124	PAD,9X17,4HOLES,W/BP,CERULEAN LTHR	18.24
CWPD1105B-125	PAD,9X17,4HOLES,W/BP,CHARCOAL LTHR	18.25
CWPD1105B-126	PAD,9X17,4HOLES,W/BP,HUNTER LTHR	18.26
CWPD1105B-127	PAD,9X17,4HOLES,W/BP,MOSS LTHR	18.27
CWPD1105B-128	PAD,9X17,4HOLES,W/BP,SPICE LTHR	18.28
CWPD1105B-129	PAD,9X17,4HOLES,W/BP,TOMATO LTHR	18.29
CWPF3442-741	TUBE,STEEL,RND DOM 1/2 ID X 0.995"	19
CWCP1033-101	CUT PIECE, CREPE, 7/16 X 4 X 4, 1 H	20
CWSA1108-741	ASSY,WEIGHT,HOLDER,1.5 X 13.5,CLEAR	20
CWHCYN050-100	SCREW,HEX HEAD,BLK XYLAN,1/2-13 X 1	21
CWHCYN050-300	SCREW, HEX HEAD, BLK XYLAN, 1/2-13	22
CWKAYN050-031	LOCKNUT, NYLON INSERT, HALF, UNC, 1	23
CWTAYN031-300	SCREW, BUTTON HEAD, BLK XYLAN,5/16	24
CWCAYN038-100	SCREW, SOCKET HEAD, BLK XYLAN, 3/	25
CWWBKN031-007	WASHER, FLAT, TYPE A, SAE, 5/16 ID	26
CWWBKN038-007	WASHER, FLAT, TYPE A, SAE, 3/8 ID	27
CWWALYN031-008	WASHER, SPLIT, 5/16 ID, BL	28
CWWALYN038-009	WASHER, SPLIT, 3/8 ID, BLK XYLAN	29
CWWALYN050-013	WASHER, SPLIT, 1/2 ID, BLK XYLAN	30
CW31756-101	LABEL, PRECOR USA ICARIAN LINE	31
CWAC1178-101	FLOOR PROTECTOR, RUBBER, 2.563 X 6.	501
CWAC1231-101	FLOOR PROTECTOR, RUBBER, 5.563 X 4.	502